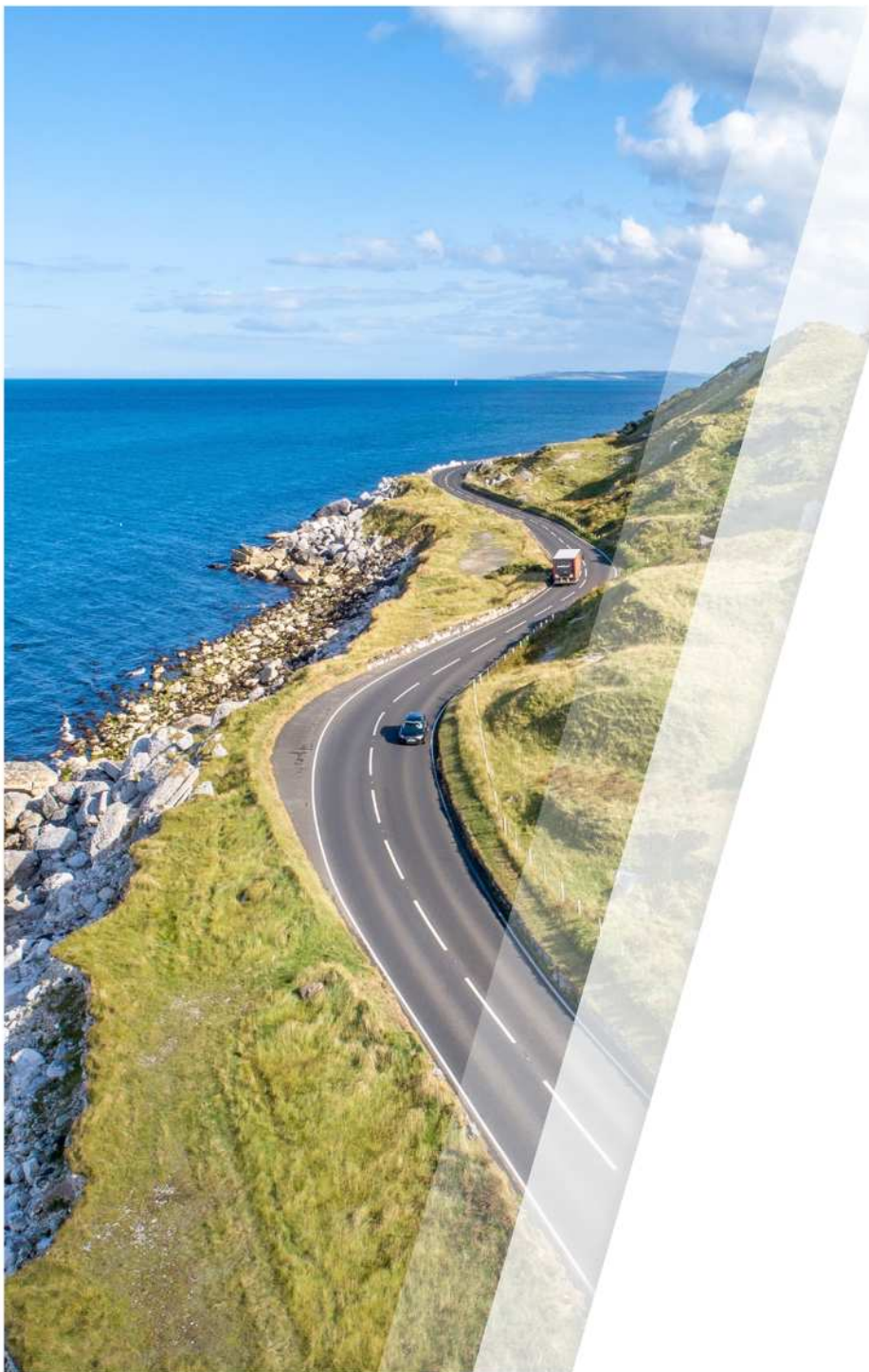


# CORPORATE PROFILE 2025

---

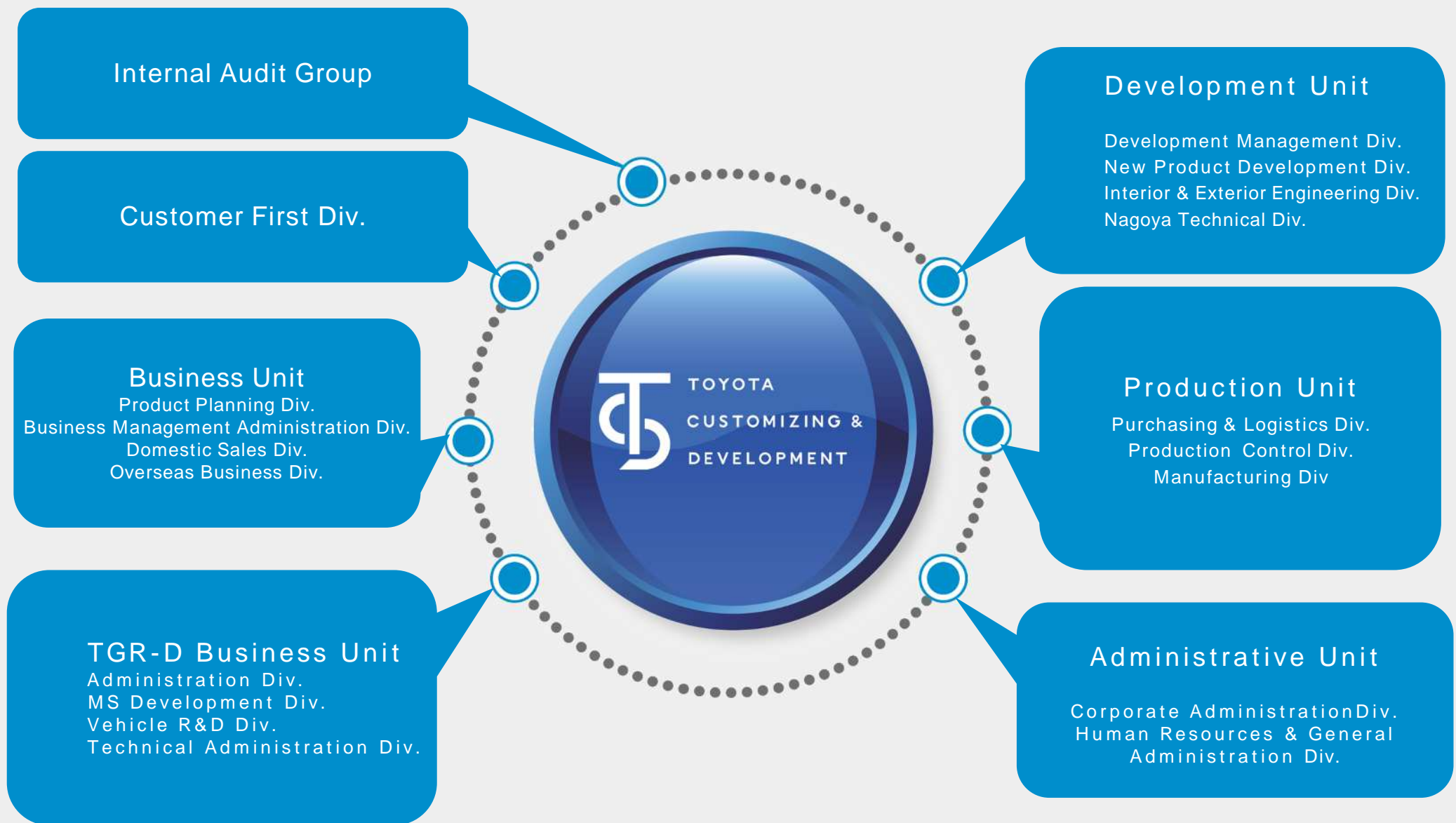




# CORPORATE OVERVIEW

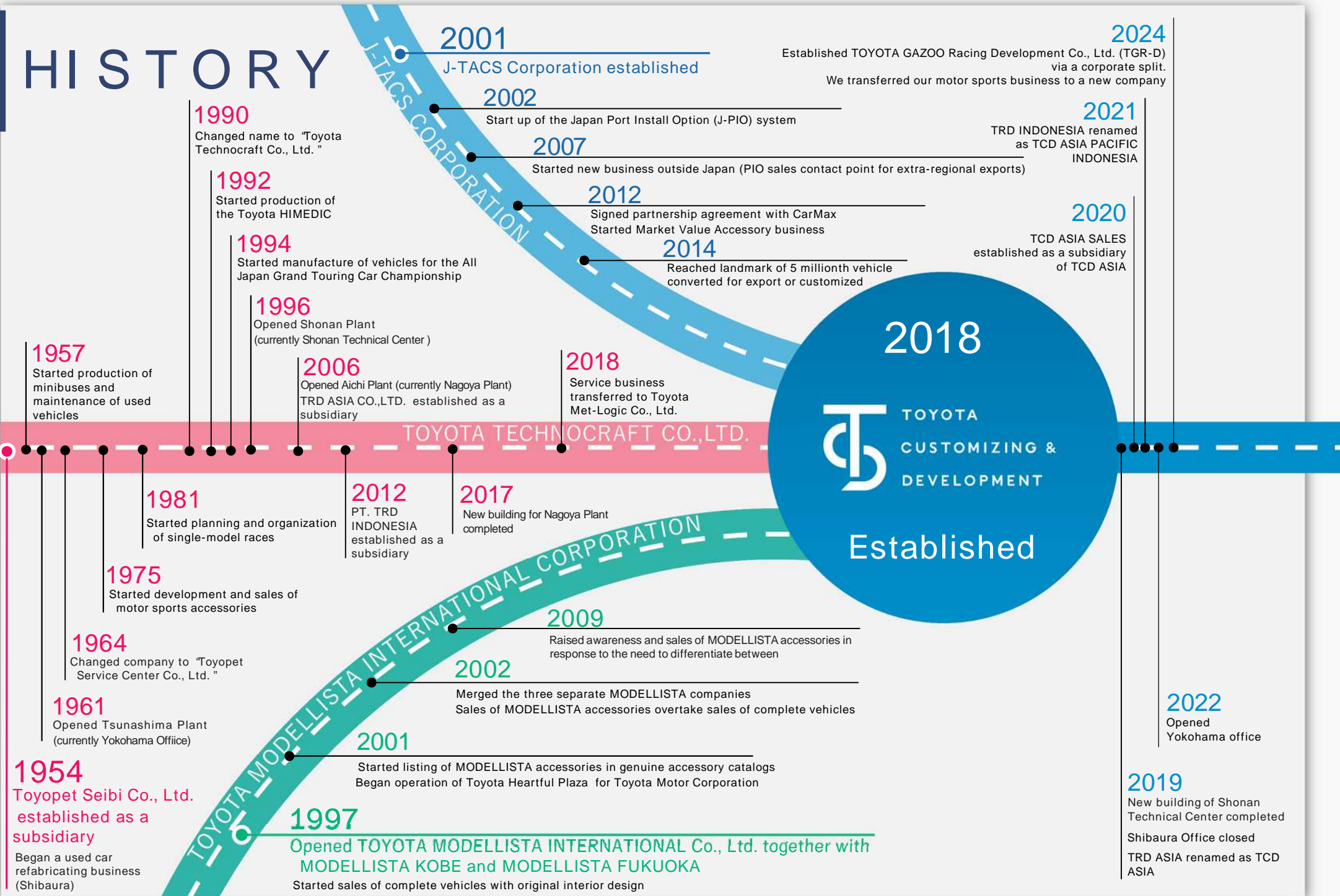
Company name	TOYOTA CUSTOMIZING & DEVELOPMENT Co., Ltd.
Date established	April 1, 2018
Head Office	800, Morooka-cho Kohoku-ku, Yokohama-shi, Kanagawa-ken, 222-0002 Japan
Capital	1,700 million yen (JPY)
Shareholders	Toyota Motor Corporation (90.5%), Toyota Tsusho Corporation (9.5%)
Number of employees	947 (As of August 2025)
Outline of business	<ul style="list-style-type: none"><li>• J-PIO (=Japan-Port Installation Option) Accessory development / installation and conversion for Japan-CBU vehicles export Efficient and total business coordination from planning to after-sales service</li><li>• ‘Planning, development, production, sales, etc. ’of Special Purpose Vehicles for Japanese and overseas markets</li><li>• ‘Those ’of accessories for MODELLISTA, GR PARTS, etc.</li><li>• Development commissioned by Toyota Motor Corporation</li></ul>
Main customers	Toyota Motor Corporation, Toyota distributors, Toyota dealers across Japan, etc.

# ORGANIZATION





# HISTORY





MODELLISTA

CROWN ESTATE MODELLISTA Ver.



MODELLISTA

ALPHARD MODELLISTA Ver.



GR  
PARTS

GR YARIS GR PARTS



LAND CRUISER 250 Overseas Ver.

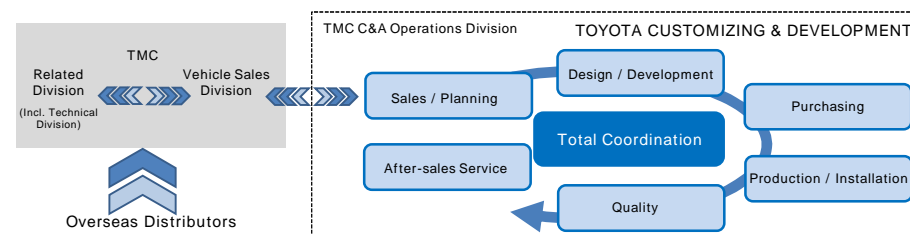
## Accessory and Customization Business

Development and sales of MODELLISTA, GR PARTS, etc.

- Manufacture, sales and after-service of customized parts tied up with Toyota

Various kinds of customized parts simultaneously sold at the time of new vehicle launch

Planning and development of export vehicles that meet various needs of overseas markets



- Customization, conversion, and parts sale business

Established the capability to flexibly meet the needs of customers throughout the world by utilizing Toyota's J-PIO network (a function that carries out planning, development, procurement, and customization of genuine parts for people outside Japan) to consolidate functions and increase operational efficiency.

Expanded accessory business to global models through partnerships with subsidiaries (TCD ASIA and TCD AP INDONESIA)



# Conversion Business

We develop and manufacture  
Toyota customized vehicles

- **Conversion Business:**  
Planning and production of various special purpose vehicles and complete vehicles (ambulances, highway patrol cars, Hiace MRT, etc.)



- **Advanced development:**  
Entrusted with projects by Toyota Motor Corporation and supported development



Toyota HIMEDIC "high-standard" ambulance

# LOCATION



Production sites

Nagoya Plant  
(Tokai-shi, Aichi-ken)

Technical Centers  
Shin-Tokai Conversion Center  
Meiko Center  
Tahara Conversion Center

Development site

Shonan Technical Center  
(Ashigarakami-gun, Kanagawa-ken)



Planning, sales, and corporate HQ

Yokohama Office  
(Yokohama-shi, Kanagawa-ken)

Global offices and affiliated companies

